

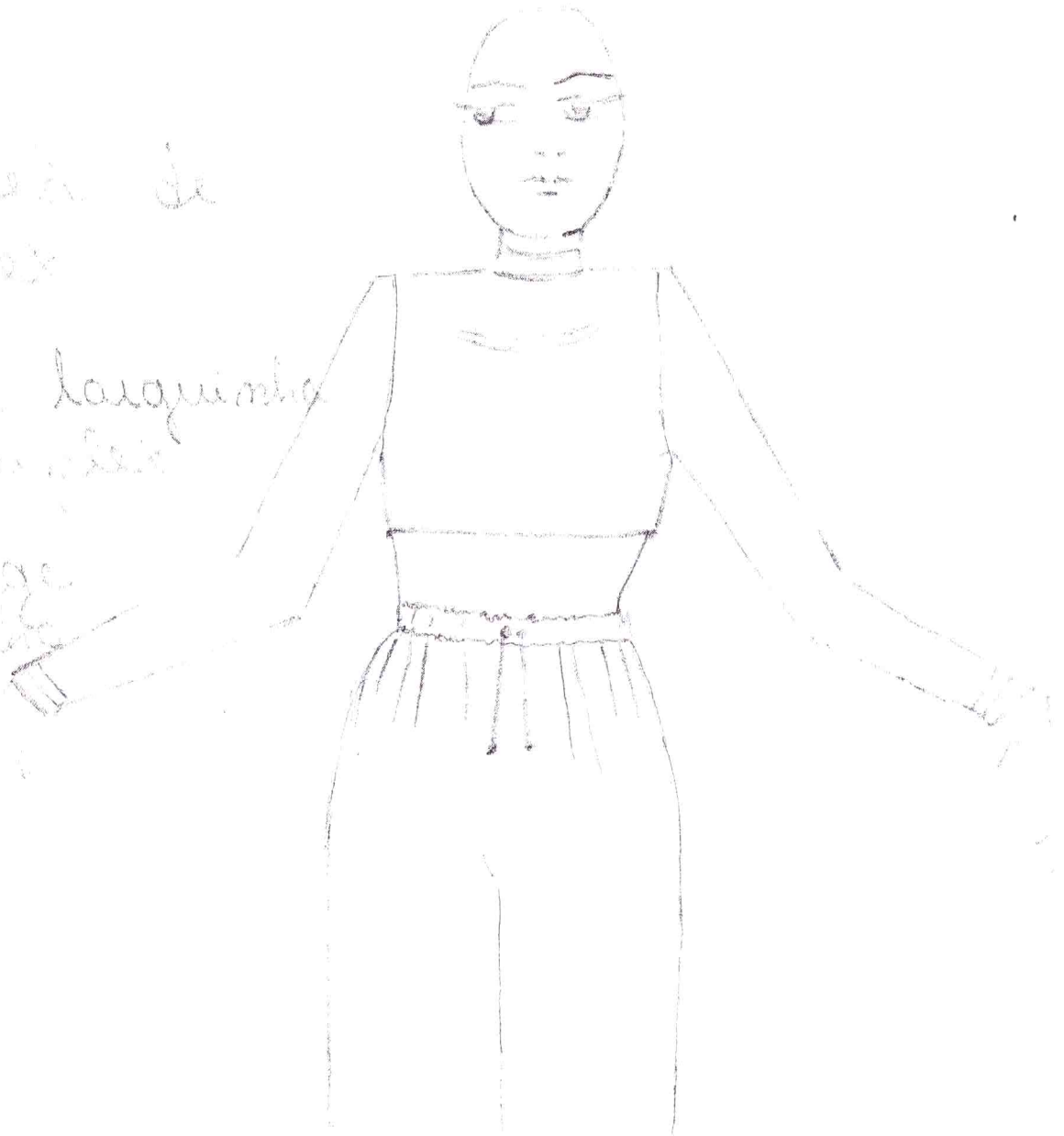
ANEXO 1.

Grupo juvenil

crop top de
tela leve

camisa larguinha
em tecido

shorts
com elástico



6

ALERTA AMBER

Croped de suplex
modelo de alambica

Calção curto

Tecido suplex

Vestido de tecido

segunda pele

com elástico

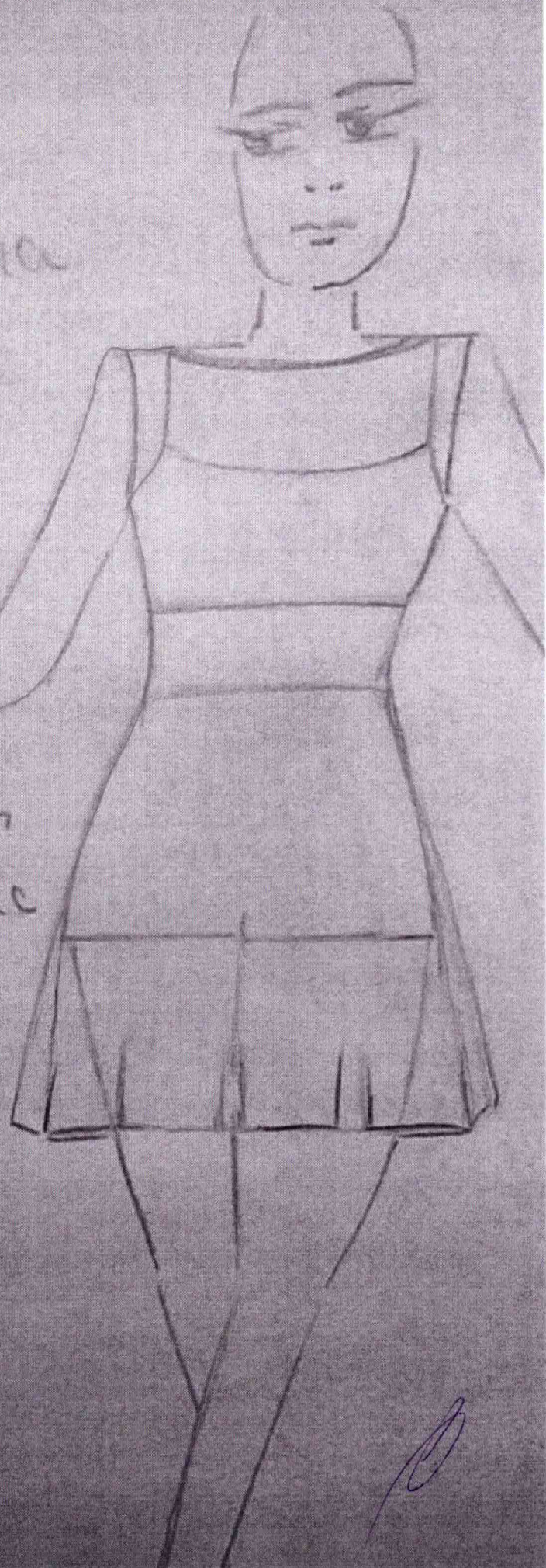
degrê camoa sem

mangas 1/2 abertura

lateral até a

cintura

con: terra

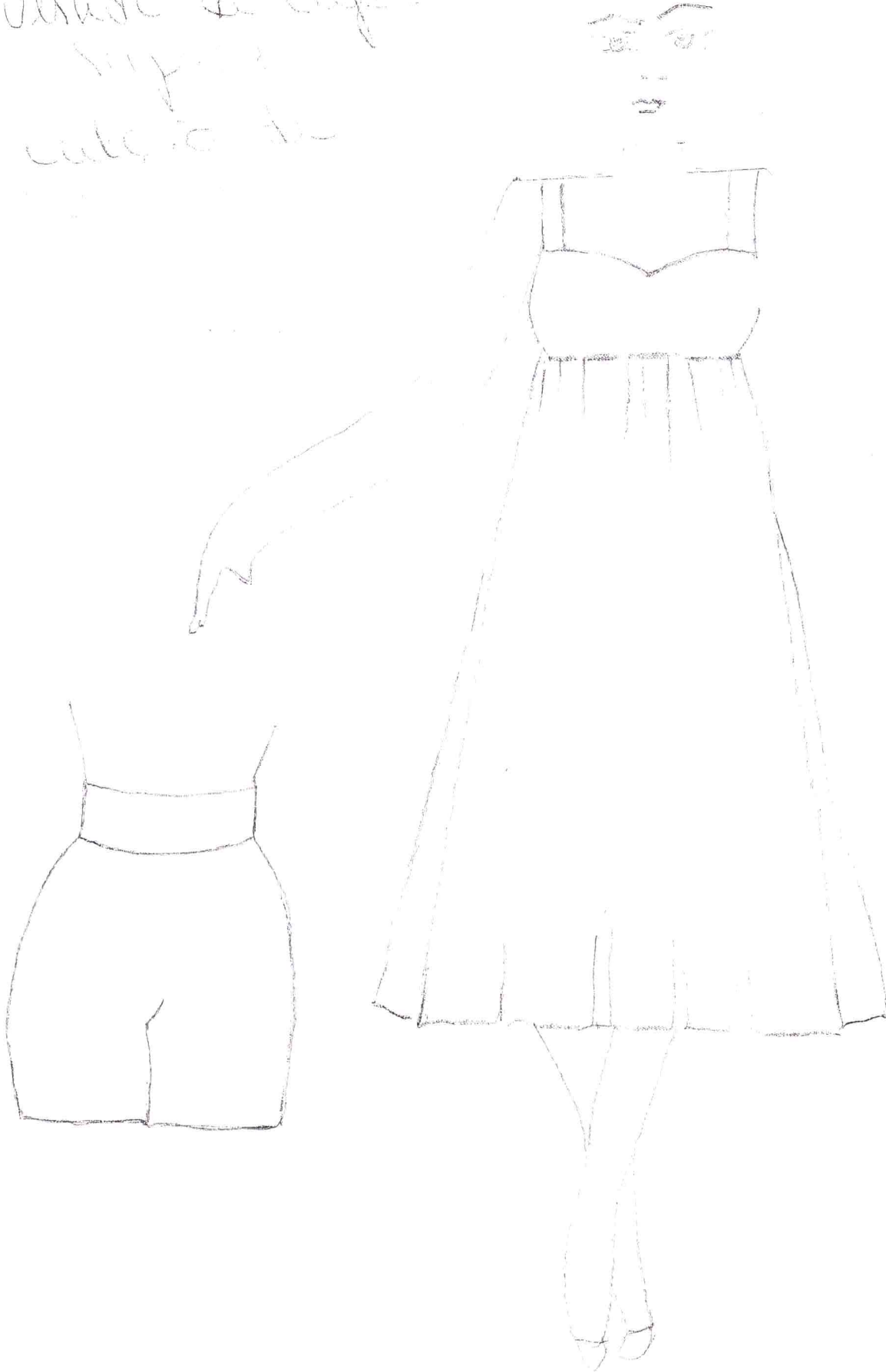


Abria ombra 2

ANEXO 3

vestido de corpo
simples

- calcão de



ANEXO H

Todos a

lado

8/9 años

energía d

Unidad d

agua

- el agua

no se



A blue ink signature or mark, possibly a stylized letter 'B' or a similar symbol, located in the bottom right corner of the page.

1
Ocaso a
bordo
Marinista

- Meia-calça jeans
- Camiseta
- Jaqueta
- Lenço

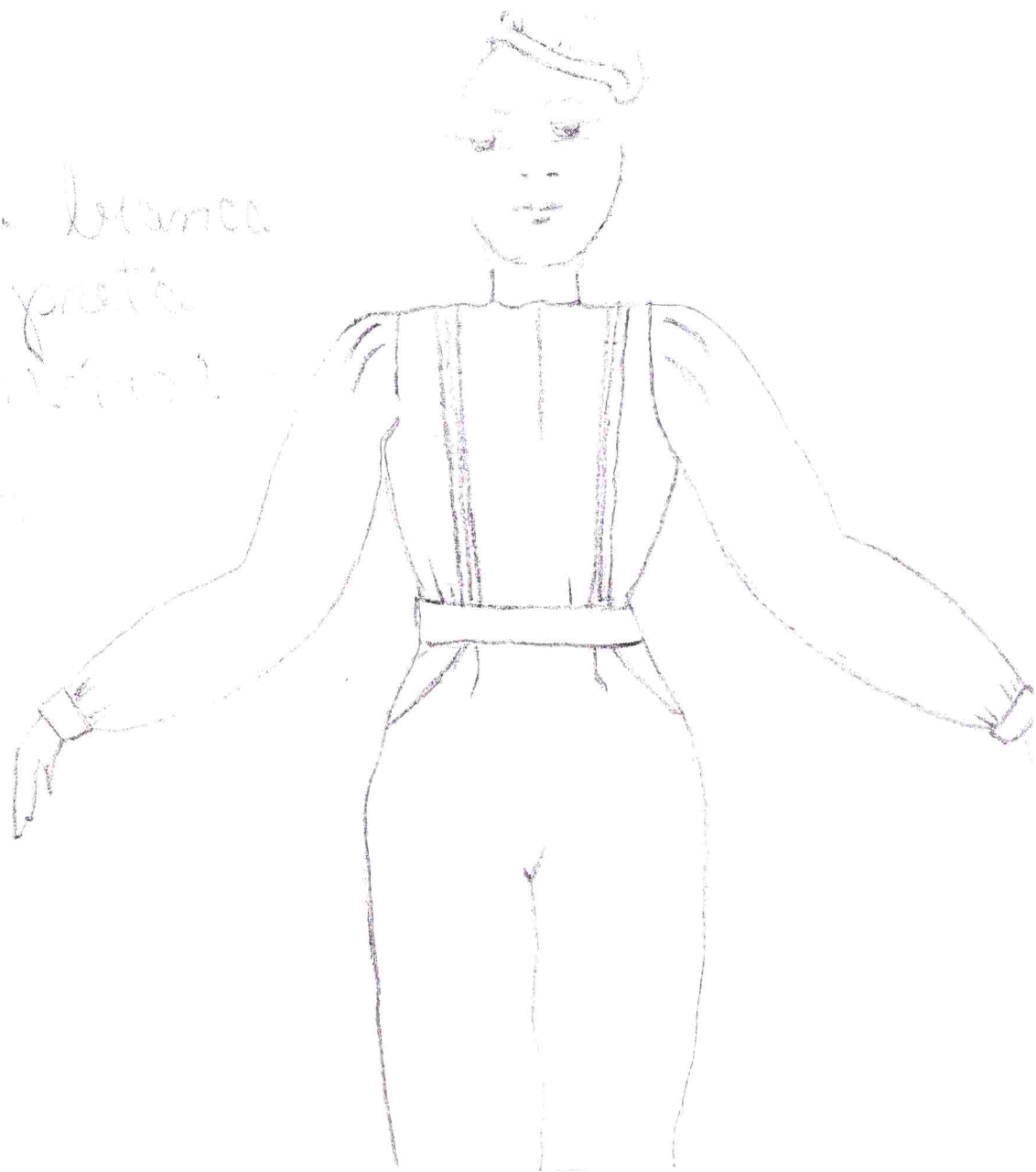


1 1/2

ANEXO 6

Esuitoras
Korvins

- Camisa branca
- calça preta
- sapatos pretos

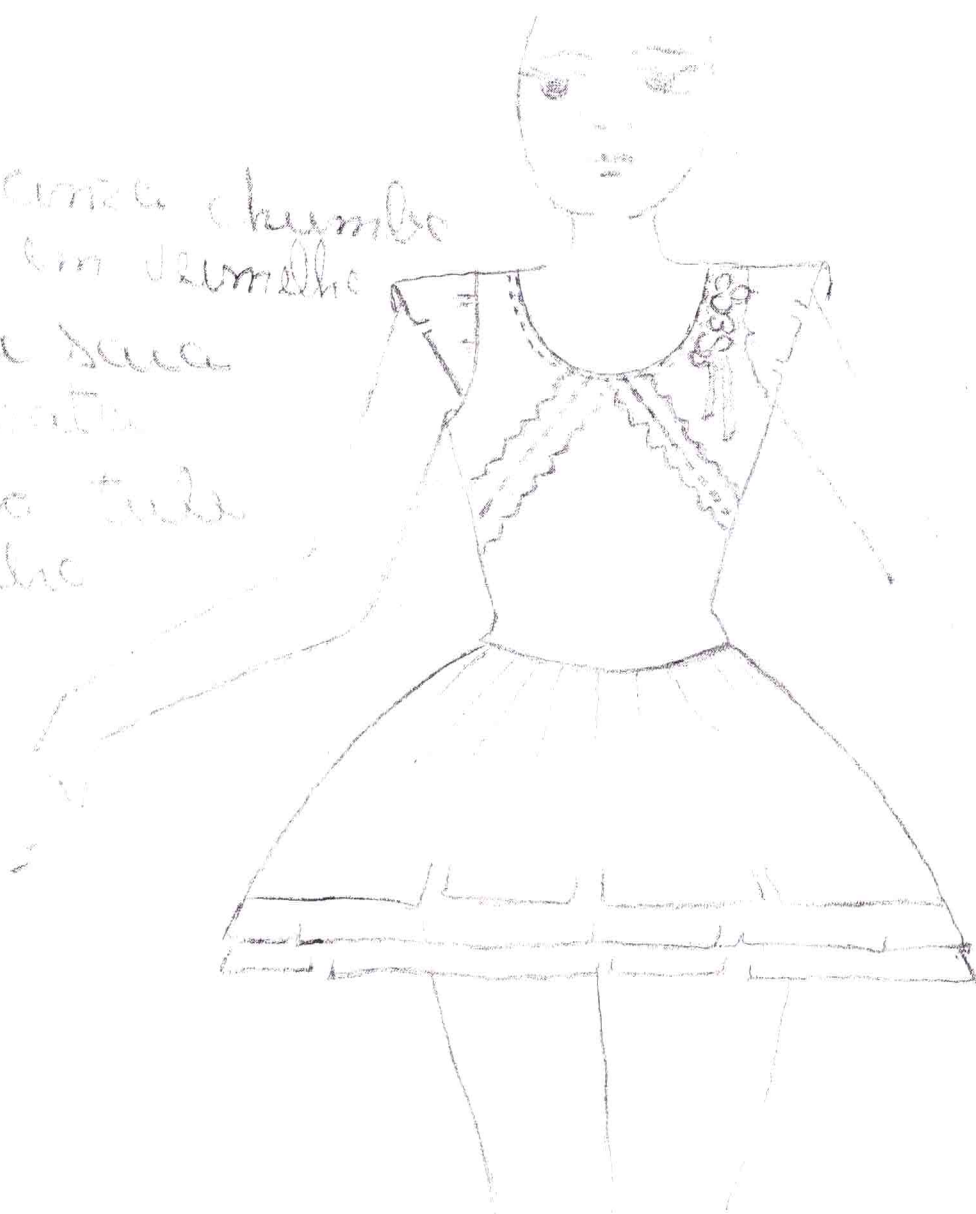


A blue ink signature or mark, possibly a stylized letter 'A' or a similar symbol, located in the bottom right corner of the page.

ANEXO 7

Esculturas
Feminino

- colar com amênia chumbo
detalhes em vermelho
- mangas e saia
amênia prata
- amáquio todo
vermelho





OCULOS MODELO HARRY POTTER

A small, stylized blue signature or mark, possibly a logo or a handwritten signature, located in the bottom right corner of the page.

BOINA ESCRITOR



LAMPIÃO SOLAR E LANTERNA LED



A handwritten signature in blue ink, located in the bottom right corner of the page.